

CO₂ Software Capstone Presentation



James Beasley, Andrew Greene, Sam Beals, Joseph Kelroy

Mentor: Ana Steinmacher

Sponsors: Dr. Andrew Richardson & Dr. Mariah Carbone

Problem Statement

- Ecological data collection in the field
- Requires Windows laptop
- Long setup / teardown process
- Outputs unreadable text files
- Stats must be computed
by external software



Problem Statement



Problem Statement

```
LogFile1 - Notepad
File Edit Format View Help
"2017-10-13 at 13:01"
Date(Y-M-D) Time(H:M:S) CO2(ppm) H2O(ppt) H2O(C) Cell_Temperature(C) Cell_Temperature(C)
2017-10-13 13:01:35 49109.70 21.04 14.59 51.31 79.23 0.6014 0.0949
2017-10-13 13:01:36 49149.10 21.05 14.60 51.29 79.21 0.6014 0.0949
2017-10-13 13:01:37 49098.90 21.05 14.60 51.25 79.20 0.6013 0.0950
2017-10-13 13:01:38 49103.40 21.06 14.60 51.28 79.21 0.6013 0.0949
2017-10-13 13:01:39 49089.10 21.05 14.60 51.28 79.23 0.6013 0.0949
2017-10-13 13:01:40 49081.60 21.03 14.59 51.29 79.21 0.6013 0.0949
2017-10-13 13:01:41 9416.53 21.81 15.19 51.31 79.42 0.3533 0.1114
2017-10-13 13:01:42 7126.35 45.37 27.32 51.31 80.38 0.4713 0.1608
2017-10-13 13:01:43 117865.00 43.80 26.71 51.28 80.34 0.6603 0.1563
2017-10-13 13:01:44 69343.00 41.87 25.78 51.25 79.56 0.6174 0.1467
2017-10-13 13:01:45 51403.70 39.64 24.80 51.25 79.29 0.6058 0.1448
2017-10-13 13:01:46 49868.80 40.17 25.02 51.25 79.24 0.6048 0.1461
2017-10-13 13:01:47 49684.30 40.55 25.17 51.25 79.22 0.6045 0.1468
2017-10-13 13:01:48 49519.60 40.66 25.22 51.29 79.22 0.6042 0.1469
2017-10-13 13:01:49 49397.30 40.66 25.22 51.29 79.23 0.6041 0.1469
2017-10-13 13:01:50 49309.20 40.63 25.20 51.28 79.23 0.6040 0.1468
2017-10-13 13:01:51 49357.80 40.61 25.19 51.25 79.21 0.6040 0.1467
2017-10-13 13:01:52 49364.00 40.57 25.18 51.25 79.21 0.6040 0.1467
2017-10-13 13:01:53 49362.20 40.53 25.16 51.27 79.22 0.6040 0.1466
2017-10-13 13:01:54 49396.50 40.50 25.15 51.29 79.22 0.6041 0.1465
2017-10-13 13:01:55 49443.40 40.49 25.15 51.29 79.21 0.6041 0.1465
```

Our Solution



Requirements and Specifications

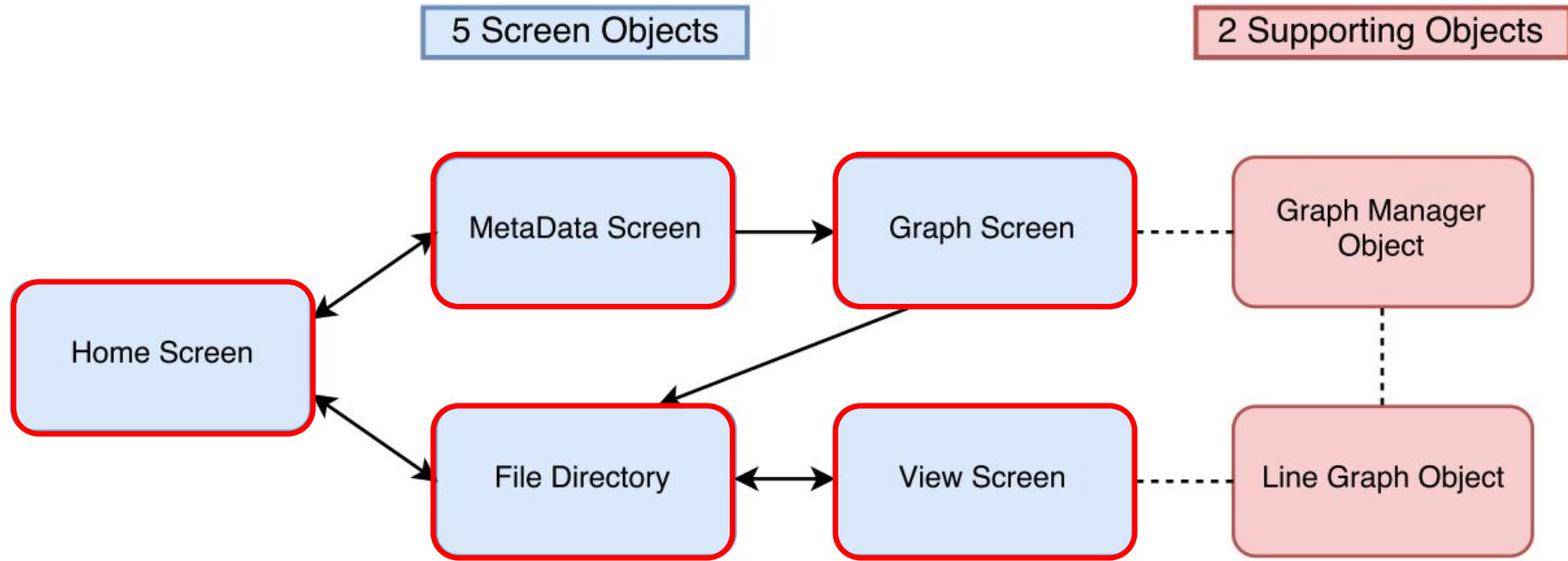
- Mobility
- Communication with LI-840A Gas Analyzer
- Live visual data readout
- Organization of data sets
- In app statistical computations
- Transfer data out of the application



Solution Overview

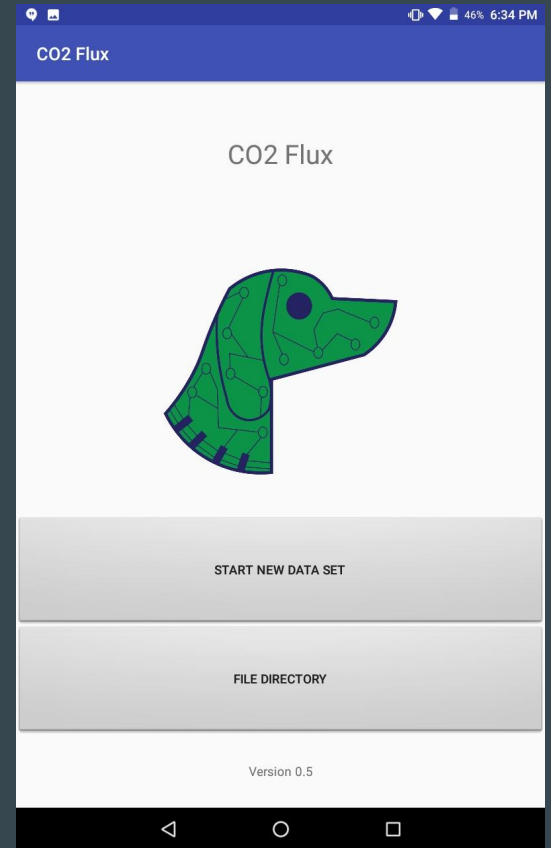
Solution	Key Feature
Android Mobile Application	Mobile Android Device
Android USBSerial Library	Connection from LI-840A to Device
Android GraphView Library	Real Time Data Streaming
Data Management	Scientific MetaData Template
Apache Common Math Library	Data Review and Statistical Analysis
Email Functionality	Built in Email Support

Architecture Overview



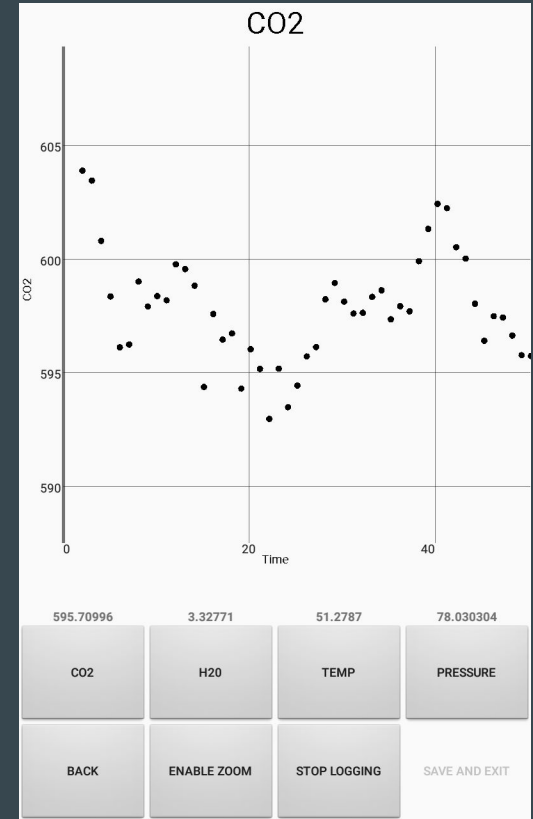
Solution Implementation

- Our solution is a Mobile App, CO2 Flux
- Consists of five different windows that each provide different functionalities
- Functions all serve to meet Requirements



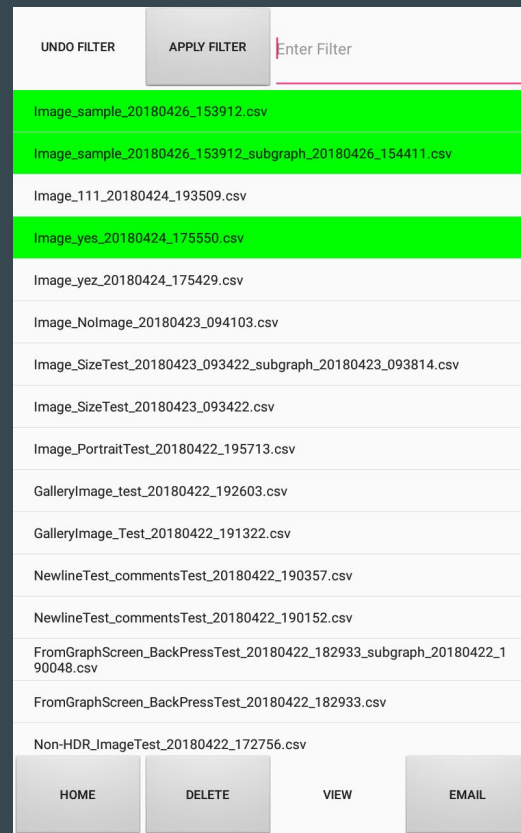
Real-Time Data Streaming

- Data Streamed from LI-840A gas analyzer via USB connection
- Visualizes Data in Graphs
- App creates Data sets of Graph, Meta, and Image Data



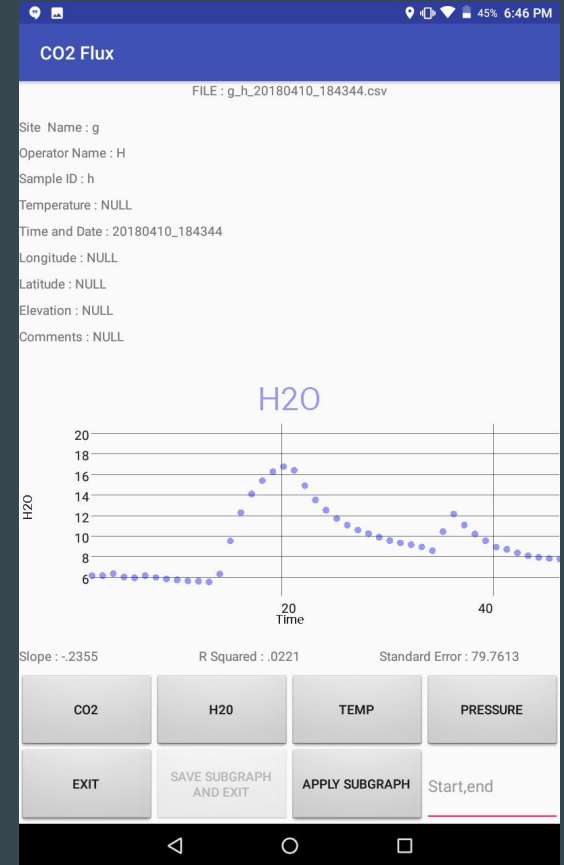
Data Management and Transference

- File Directory Screen
- Integrated email client functionality.
- User is able to delete any unwanted files
- Individual Data Sets can be examined with more detail



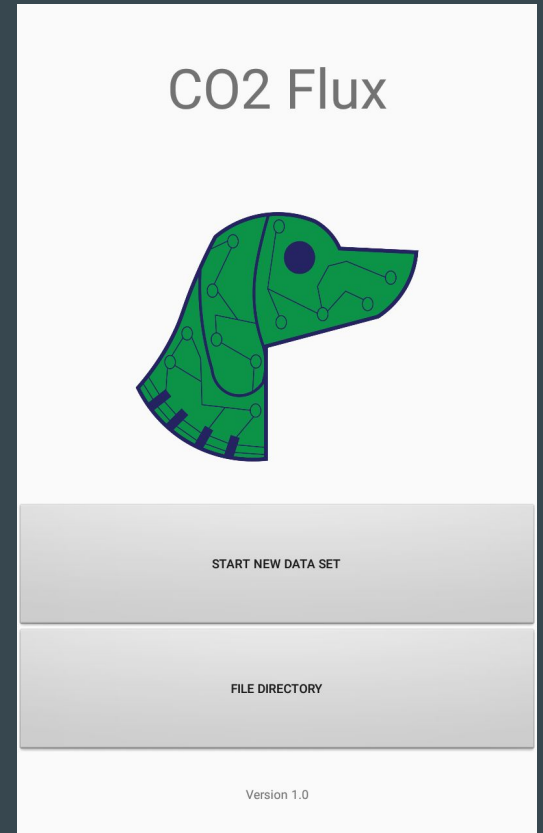
Data Review/ Subset Creation

- Displays the saved data set with adjustable scaling
- Plots a regression line and provides Statistical Computation
- If a user is interested in one section of the graph, they are able to make a subgraph, which is saved and named in the file directory.



Prototype Review

- Walkthrough of typical Use-Case of app



MetaData Screen

Meta Data

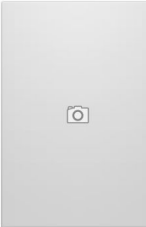
Operator Name: **Required**

Site Name: **Required**

Sample ID: **Required**

Temperature: Degrees in Celsius

Additional Comments



No Image Taken

Apr 26, 2018 3:55:00 PM

Tap To Enter Longitude

Tap To Enter Elevation (meters)

Tap To Enter Latitude

CANCEL FINISH

MetaData Screen

Meta Data

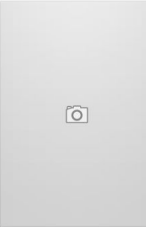
Operator Name: Andrew Greene


Site Name: Image

Sample ID: sample

Temperature: 23

Additional Comments

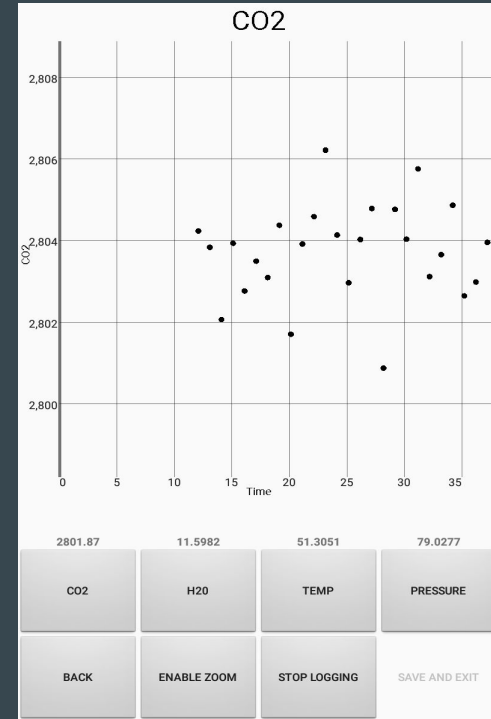
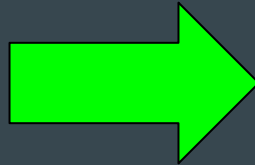
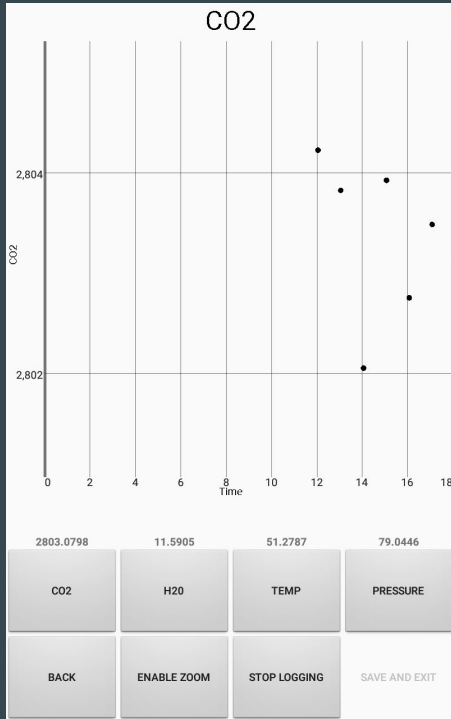




Apr 26, 2018 3:39:12 PM -111.6513

2100 35.1963

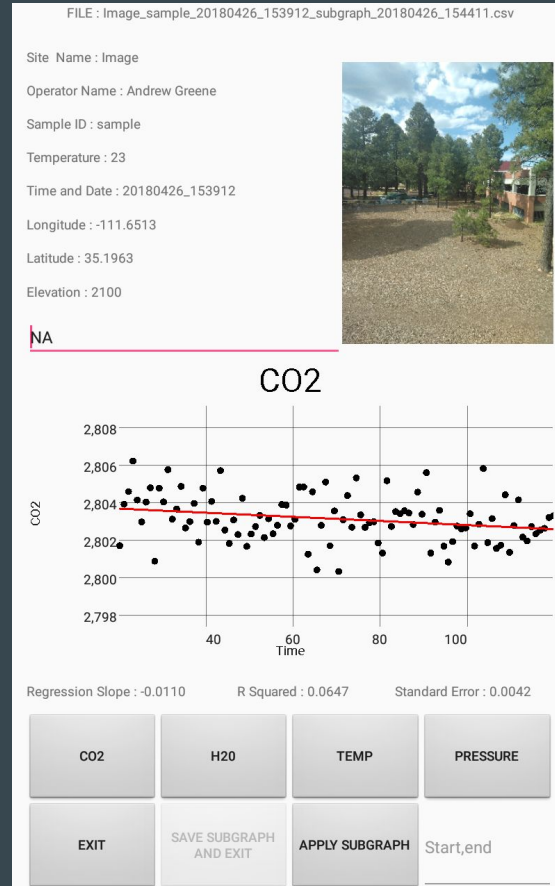
Graphing Screen



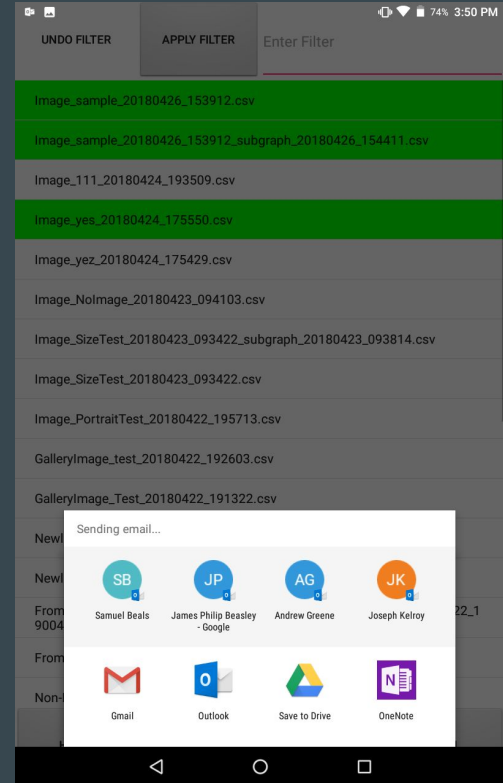
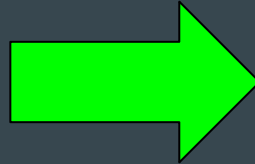
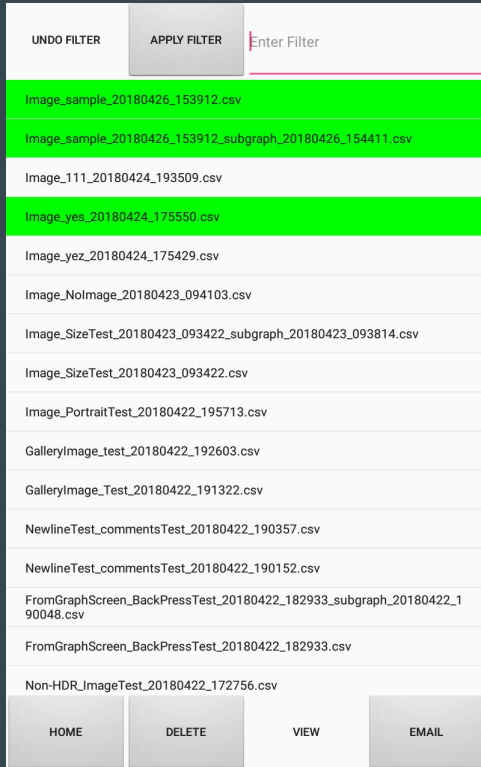
File Directory Screen

UNDO FILTER	APPLY FILTER	Enter Filter	
Image_sample_20180426_153912.csv			
Image_sample_20180426_153912_subgraph_20180426_154411.csv			
Image_111_20180424_193509.csv			
Image_yes_20180424_175550.csv			
Image_yez_20180424_175429.csv			
Image_NoImage_20180423_094103.csv			
Image_SizeTest_20180423_093422_subgraph_20180423_093814.csv			
Image_SizeTest_20180423_093422.csv			
Image_PortraitTest_20180422_195713.csv			
GalleryImage_test_20180422_192603.csv			
GalleryImage_Test_20180422_191322.csv			
NewlineTest_commentsTest_20180422_190357.csv			
NewlineTest_commentsTest_20180422_190152.csv			
FromGraphScreen_BackPressTest_20180422_182933_subgraph_20180422_190048.csv			
FromGraphScreen_BackPressTest_20180422_182933.csv			
Non-HDR_ImageTest_20180422_172756.csv			
HOME	DELETE	VIEW	EMAIL

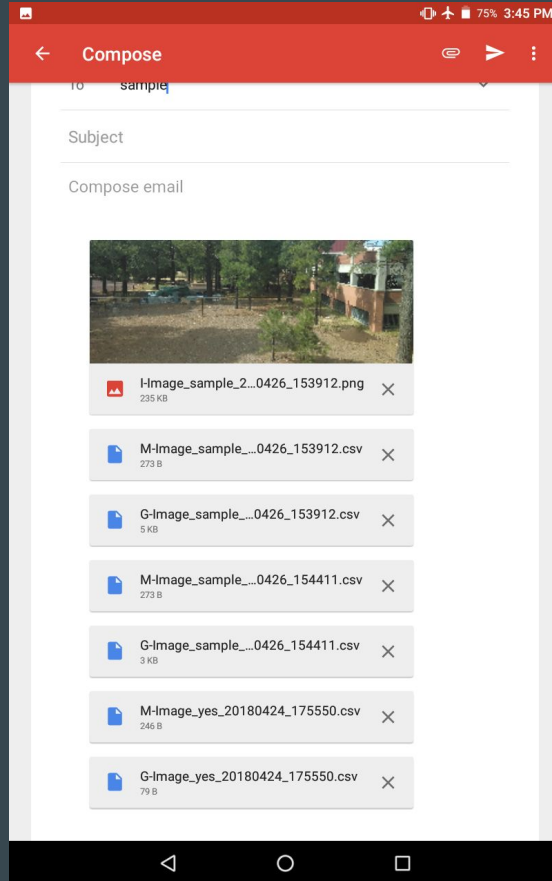
Viewing Screen



File Directory Screen



Email



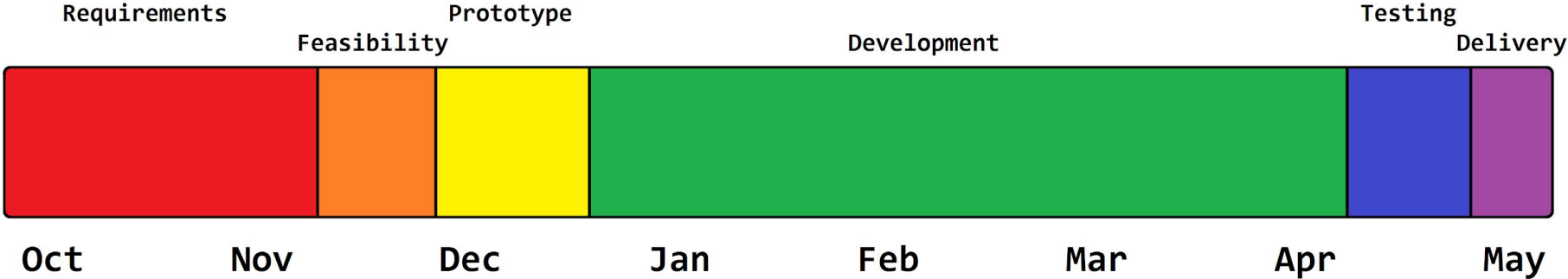
Testing

- Unit Testing
 - Testing main functions
- Integration Testing
 - Making sure application handles data as intended
- Usability Testing
 - Time tests based on new and experienced users

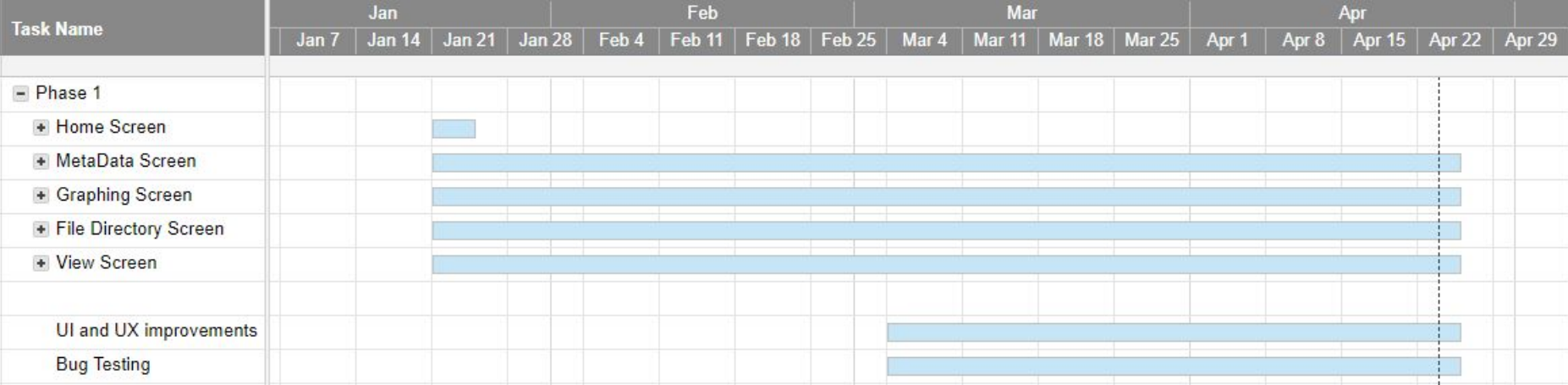
Challenges

- Connection
 - Serial data streaming to the application
- Android application development
 - General learning curve
- Overall design
 - Revisions with clients needs

Milestone Timeline



Gantt Chart



Future Work

- Compatibility with other gas analyzers
- Additional statistical analysis
- Multiple picture functionality
- Writing a publication on the application



Conclusion

- CO2 Flux: A Mobile Application for Ecological Data Collection
- Improves the CO2 data collection process
 - Mobile
 - Visual Data Readout
 - Faster
- All the functionality of the previous system and more

Questions?



Contact Information
James Beasley
JPB249@nau.edu